



Powertech
Transformers

Bahrain Botswana

Date	MVA	kV Ratio	HV	LV	TER	Country	Customer	Site
1970	15	66/11	66	11	-	Namibia	Swawek	Van Eck P/S
1970	35	66/11	66	11	-	Namibia	Swawek	Van Eck P/S
1970	90	330/88/11	330	88	11	Zambia	Central African Power Corp	Warren S/S
1970	90	330/88/11	330	88	11	Zambia	Central African Power Corp	Warren S/S
1971	10	88/33	88	33	-	Zambia	Zambia Electr. Supply Corp	Ndola S/S
1973	40	220/11	220	11	-	Namibia	Swawek	Van Eck P/S
1973	40	220/11	220	11	-	Namibia	Swawek	Van Eck P/S
1974	16	132/11	132	11	-	Iran	Iran	Teheran
1974	40	330/60/22	330	66	22	Namibia	Swawek	Ruacana P/S
1974	40	330/60/22	330	66	22	Namibia	Swawek	Ruacana P/S
1974	90	330/11	330	11	-	Namibia	Swawek	Ruacana P/S
1974	90	330/11	330	11	-	Namibia	Swawek	Ruacana P/S
1977	6	66/32	66	33	-	Mocambique	Electricidade De Mocambique	Maputo
1977	10	132/66/3.3	132	66	3.3	Namibia	Swawek	Ruacana P/S
1977	10	132/66/3.3	132	66	3.3	Namibia	Swawek	Ovambo
1977	20	66/11	66	11	-	Namibia	Swawek	Windhoek
1977	20	66/11	66	11	-	Namibia	Swawek	Windhoek
1977	35	220/11	220	11	-	Namibia	Swawek	Van Eck P/S
1978	12.5	66/11	66	11	-	Malawi	Escom	Hydro Lilongwe B S/S
1978	12.5	66/11	66	11	-	Malawi	Escom	Hydro Nkula B S/S
1978	12.5	66/11	66	11	-	Malawi	Escom	Mal. Hydro Nkula B S/S
1978	25	66/11	66	11	-	Malawi	Escom	Mal. Hydro Nkula B S/S
1978	25	66/11	66	11	-	Malawi	Escom	Mal. Hydro Nkula B S/S
1978	25	132/11	132	11	-	Malawi	Escom	Mal. Hydro Nkula B S/S
1979	10	115/13.8-24	115	13.8-24	-	Chile	Endesa	Endesa
1979	10	115/13.8-24	115	13.8-24	-	Chile	Endesa	Endesa
1979	12.5	66/11	66	11	-	Malawi	Escom	Mal. Hydro Nkula B S/S
1979	25	132/66	132	66	-	Malawi	Escom	Mal. Hydro Nkula B S/S
1979	25	132/67	132	66	-	Malawi	Escom	Mal. Hydro Nkula B S/S
1979	25	132/68	132	66	-	Malawi	Escom	Mal. Hydro Nkula B S/S
1979	11	66/22	66	22	-	Mauritius	Central Electricity Board	Various S/S
1979	11	66/22	66	22	-	Mauritius	Central Electricity Board	Various S/S
1979	11	66/22	66	22	-	Mauritius	Central Electricity Board	Various S/S
1979	11	66/22	66	22	-	Mauritius	Central Electricity Board	Various S/S
1979	11	66/22	66	22	-	Mauritius	Central Electricity Board	Various S/S
1979	11	66/22	66	22	-	Mauritius	Central Electricity Board	Various S/S
1979	30	66/22	66	22	-	Mauritius	Central Electricity Board	Various S/S
1979	30	66/22	66	22	-	Mauritius	Central Electricity Board	Various S/S



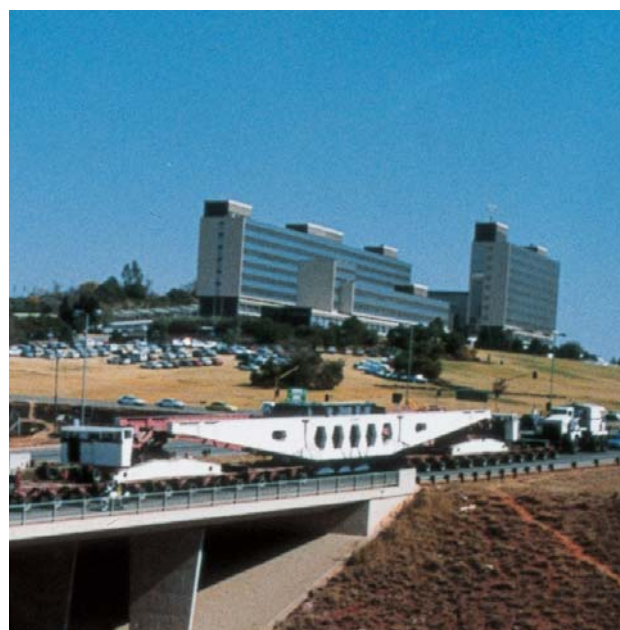
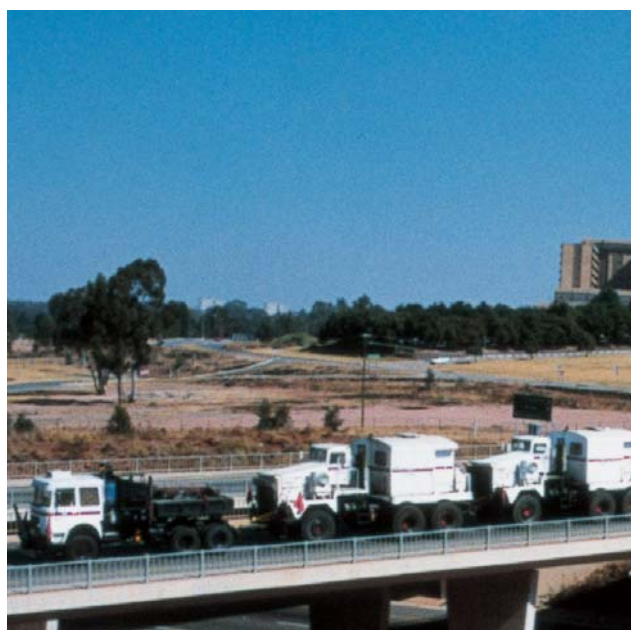
Botswana Brazil Chile Congo

Date	MVA	kV Ratio	HV	LV	TER	Country	Customer	Site
1980	20	132/11	132	11	-	Botswana	Botswana Power Corp	Gaborone
1980	20	132/11	132	11	-	Botswana	Botswana Power Corp	Gaborone
1980	20	132/66	132	66	-	Botswana	Botswana Power Corp	Gaborone
1980	20	132/66	132	66	-	Botswana	Botswana Power Corp	Gaborone
1980	28	138/13.8	138	13.8	-	Ecuador	Inecel Via Aeg Essen	Ecuador
1980	28	138/13.8	138	13.8	-	Ecuador	Inecel Via Aeg Essen	Ecuador
1980	28	138/13.8	138	13.8	-	Ecuador	Inecel Via Aeg Essen	Ecuador
1983	10	33/11	33	11	-	Lesotho	Lesotho Electricity Corp	Maseru
1984	3.6	72	72	-	-	Namibia	Swawek	Luderitz
1985	10	132/11	132	11	-	Botswana	Botswana Power Corp	Gaborone South
1985	10	132/11	132	11	-	Botswana	Botswana Power Corp	Gaborone South
1987	20	132/11	132	11	-	Botswana	Botswana Power Corp	Gaborone South
1987	20	132/11	132	11	-	Botswana	Botswana Power Corp	Gaborone South
1987	20	132/11	132	11	-	Botswana	Botswana Power Corp	Gaborone South
1987	20	66/11	66	11	-	Namibia	Windhoek Municipality	Windhoek



Date	MVA	kV Ratio	HV	LV	TER	Country	Customer	Site
1987	20	66/11	66	11	-	Namibia	Windhoek Municipality	Windhoek
1988	20	132/33	132	33	-	Botswana	Botswana Power Corp	Broadhurst
1988	40	132/11	132	11	-	Botswana	Botswana Power Corp	Gaborone South
1988	41.25	240/11	240	11	-	Botswana	Botswana Power Corp	Morupule
1988	25	132/33	132	33	-	Botswana	Botswana Power Corp	Jwaneng
1988	25	132/33	132	33	-	Botswana	Botswana Power Corp	Jwaneng
1988	61	220/6.65	220	6.65	-	Namibia	Swawek Via Aeg	Omburu
1988	6.5	60/6	60	6	-	Portugal	Kuehne & Nagel	Lisbon
1988	6.5	60/6	60	6	-	Portugal	Kuehne & Nagel	Lisbon
1989	10	132/11	132	11	-	Botswana	Botswana Power Corp	Francistown
1989	10	132/11	132	11	-	Botswana	Botswana Power Corp	Francistown
1989	10	132/11	132	11	-	Botswana	Botswana Power Corp	Swapan
1989	10	132/11	132	11	-	Botswana	Botswana Power Corp	Swapan
1989	5	66/22	66	22	-	Namibia	Swawek	Brakwater Stores
1989	5	66/22	66	22	-	Namibia	Swawek	Brakwater Stores
1989	7	132	132	-	-	Namibia	Swawek	Koichas
1989	7	132	132	-	-	Namibia	Swawek	Brakwater Stores
1989	25	132/66/22	132	66	22	Namibia	Swawek	Koichas
1989	25	132/66/23	132	66	23	Namibia	Swawek	Kokerboom S/S

Congo Cote d'Ivoire Ecuador Ghana Iran Kenya Lesotho



Date	MVA	kV Ratio	HV	LV	TER	Country	Customer	Site
1989	20	132/66	132	66	-	Swaziland	Swaziland Electricity Board	Hele-Hele S/S
1989	40	132/66	132	66	11	Swaziland	Swaziland Electricity Board	Kalanga S/S
1990	5	33/11	33	11	-	Lesotho	Lesotho Electricity Corp	Ngoajane
1990	5	33/11	33	11	-	Lesotho	Lesotho Electricity Corp	Muela S/S
1990	5	33/11	33	11	-	Lesotho	Lesotho Electricity Corp	Muela S/S
1990	5	33/11	33	11	-	Lesotho	Lesotho Electricity Corp	Hololo Crossing
1990	5	33/11	33	11	-	Lesotho	Lesotho Electricity Corp	Butha Buthe S/S
1990	5	33/11	33	11	-	Lesotho	Lesotho Electricity Corp	Butha Buthe S/S
1990	5	33/11	66	11	-	Lesotho	Lesotho Electricity Corp	Hlotse S/S
1990	5	33/11	66	11	-	Lesotho	Lesotho Electricity Corp	Hlotse S/S
1990	5	33/11	66	11	-	Lesotho	Lesotho Electricity Corp	Katse Intake
1990	5	33/11	33	11	-	Lesotho	Lesotho Electricity Corp	Hololo Mobile
1990	10	132/66/11	132	66	11	Lesotho	Lesotho Electricity Corp	Pitseng
1990	10	132/66/11	132	66	11	Lesotho	Lesotho Electricity Corp	Pitseng
1990	15	66/11	66	11	-	Lesotho	Lesotho Electricity Corp	Katse Dam
1990	15	66/11	66	11	-	Lesotho	Lesotho Electricity Corp	Katse Dam
1990	20	88-66/33-11	88-66	33-11	-	Lesotho	Lesotho Electricity Corp	Khukune
1990	20	88-66/33-11	88-66	33-11	-	Lesotho	Lesotho Electricity Corp	Khukune
1990	10	33/11	33	11	-	Zambia	Escom Via Lanstar	Zambia
1991	10	132/33	132	33	-	Botswana	Botswana Power Corp	Morupule
1991	10	132/33	132	33	-	Botswana	Botswana Power Corp	Morupule
1991	20	132/66/11	132	66	11	Lesotho	Lesotho Electricity Corp	Ha Lejone
1991	20	132/66/11	132	66	11	Lesotho	Lesotho Electricity Corp	Ha Lejone
1991	7	132	132	-	-	Namibia	Swawek	Rundu
1991	25	132/66/22	132	66	22	Namibia	Swawek	Rundu
1991	40	132/66/33	220	132	33	Namibia	Swawek	Kokerboom S/S
1991	40	132/66/33	220	132	33	Namibia	Swawek	Kokerboom S/S
1991	40	132/66/33	220	132	33	Namibia	Swawek	Tsumeb
1992	12.5	66/11	66	11	-	Botswana	Botswana Power Corp	Selebe Phikwe
1992	12.5	66/11	66	11	-	Botswana	Botswana Power Corp	Selebe Phikwe
1993	5	66/11	66	11	-	Botswana	Botswana Power Corp	Masunga
1993	5	66/11	66	11	-	Botswana	Botswana Power Corp	Tutume
1993	20	132/11	132	11	-	Botswana	Botswana Power Corp	Broadhurst
1993	20	132/11	132	11	-	Botswana	Botswana Power Corp	Broadhurst
1993	20	132/33	132	33	-	Botswana	Botswana Power Corp	Mogaditsane
1993	5	66/33/1.7	66	33	1.7	Malawi	Escom	Malawi
1993	10	66/33	66	33	-	Malawi	Escom	Malawi

Lesotho Madagascar Malawi Mauritius

Date	MVA	kV Ratio	HV	LV	TER	Country	Customer	Site
1993	25	132/69/11.7	132	69	11	Malawi	Escom	Tedzani S/S
1993	31.5	132/11.5	132	11.5	-	Malawi	Escom	Tedzani III S/S
1993	31.5	132/11.5	132	11.5	-	Malawi	Escom	Tedzani III S/S
1993	37.5	230/13.8	230	13.8	-	Philippines	ABB Singapore	Calaca P/S Batangas
1993	37.5	230/13.8	230	13.8	-	Philippines	ABB Singapore	Calaca P/S Batangas
1993	37.5	230/13.8	230	13.8	-	Philippines	ABB Singapore	Calaca P/S Batangas
1994	30	220/11	220	11	-	Botswana	Botswana Power Corp	Selebi Phikwe
1994	40	220/66	220	66	-	Botswana	Botswana Power Corp	Selebi Phikwe
1994	40	220/66	220	66	-	Botswana	Botswana Power Corp	Selebi Phikwe
1994	5.05	66/3.47	66	3.47	-	Kenya	Kenya Power & Light Co.	Gigiri
1994	20	132/33	132	33	-	Lesotho	Lesotho Electricity Corp	Highlands Water Project
1994	32	138/11	138	11	-	Lesotho	Lesotho Electricity Corp	Highlands Water Project
1994	32	138/11	138	11	-	Lesotho	Lesotho Electricity Corp	Highlands Water Project
1994	32	138/11	138	11	-	Lesotho	Lesotho Electricity Corp	Highlands Water Project
1994	15	132/66/33	132	66	33	Malawi	Escom	Golomoti
1994	30	220	220	-	-	Namibia	Swawek	Omburu
1994	90	220/66	220	66	-	Namibia	Swawek	Van Eck P/S
1995	10	33/11	33	11	-	Ghana	Electricity Comm. Of Ghana	Adenta
1995	10	33/11	33	11	-	Ghana	Electricity Comm. Of Ghana	Adenta
1995	45	132/33/11	132	33	11	Kenya	Kenya Power & Light Co.	Mombasa
1995	40	220/66/22	220	66	22	Namibia	Swawek	Windhoek West
1995	7	132	132	-	-	Namibia	Swawek	Brakwater
1995	40	132/33	132	33	-	Nigeria	Nat. Elec. Power Authority	Pankshin
1995	40	132/33	132	33	-	Nigeria	Nat. Elec. Power Authority	Keffi
1995	40	132/33	132	33	-	Nigeria	Nat. Elec. Power Authority	Uyo S/S
1995	40	132/66/11	132	66	11	Swaziland	Swaziland Electricity Board	Kalanga S/S
1996	15	30/6.6	30	6.6	-	Congo	Snel	Kinshasa
1996	15	30/21.5	30	21.5	-	Congo	Snel	Kinshasa
1996	13	161/34.5	161	34.5	-	Ghana	Volta River Authority	Yendi
1996	50	110-60/20-15	110-60	20-15	-	Guinea	Enelgui	Tombo
1996	60	33/11.5	33	11.5	-	Kenya	Kenya Power & Light Co.	Sabah Kipevu
1996	25	132/66/22	132	66	22	Namibia	Swawek	Okatope
1996	60	132/22	132	22	-	Nigeria	N E P A Via Labal	Kaduna
1996	30	132/33	132	33	-	Nigeria	Nat. Elec. Power Authority	Awka
1996	40	132/22	132	22	-	Nigeria	Nat. Elec. Power Authority	Ilesha
1996	40	132/22	132	22	-	Nigeria	Nat. Elec. Power Authority	Ilesha
1996	8	33/11	33	11	-	Nigeria	Nat. Elec. Power Authority	Kaduna



Mauritius Mexico Mocambique Namibia

Date	MVA	kV Ratio	HV	LV	TER	Country	Customer	Site
1997	210	220/15.75	220	15.75	-	Bahrain	Ministry Of Energy & Water	Al Hidd
1997	210	220/15.75	220	15.75	-	Bahrain	Ministry Of Energy & Water	Al Hidd
1997	210	220/15.75	220	15.75	-	Bahrain	Ministry Of Energy & Water	Al Hidd
1997	20	132/11	132	11	-	Botswana	Botswana Power Corp	Gaborone East
1997	20	132/11	132	11	-	Botswana	Botswana Power Corp	Gaborone East
1997	15	66/33	66	33	-	Botswana	Botswana Power Corp	Mahalapye Reinforce.
1997	15	66/33	66	33	-	Botswana	Botswana Power Corp	Mahalapye Reinforce.
1997	23	132/33	132	33	-	Kenya	Kenya Power & Light Co.	Kenya
1997	315	400/220/22	400	220	22	Namibia	Nampower	Kokerboom S/S
1997	100	400	400	-	-	Namibia	Nampower	Kokerboom S/S
1997	100	400	400	-	-	Namibia	Nampower	Kokerboom S/S
1997	100	400	400	-	-	Namibia	Nampower	Kokerboom S/S
1997	40	220/11	220	11	-	Namibia	Swawek	Windhoek West
1997	15	33/11	33	11	-	Nigeria	Nat. Elec. Power Authority	Abuja
1997	30	132/33	132	33	-	Nigeria	Nat. Elec. Power Authority	Mando Road



Date	MVA	kV Ratio	HV	LV	TER	Country	Customer	Site
1997	60	132/33	132	33	-	Nigeria	Nat. Elec. Power Authority	Akangba
1997	10	90/11	90	11	-	Senegal	Senelec	Sosetra
1998	5	66/11	66	11	-	Botswana	Botswana Power Corp	Sebina Junction
1998	10	66/11	66	11	-	Botswana	Botswana Power Corp	Francistown
1998	10	66/11	66	11	-	Botswana	Botswana Power Corp	Francistown
1998	20	132/33	132	33	-	Lesotho	Lesotho Electricity Corp	Mafeteng S/S
1998	30	21/4.16/5	21	4.16/5	-	Mexico	Com. Federal de Electricidad	Monterrey
1998	30	21/4.16/5	21	4.16/5	-	Mexico	Com. Federal de Electricidad	Monterrey
1998	300	410/21	410	21	-	Mexico	Com. Federal de Electricidad	Monterrey
1998	300	410/21	410	21	-	Mexico	Com. Federal de Electricidad	Monterrey
1998	100	400	400	-	-	Mocambique	Motraco	Maputo S/S
1998	100	400	400	-	-	Mocambique	Motraco	Maputo S/S
1998	500	400/132/22	400	132	22	Mocambique	Motraco	Maputo S/S
1998	500	400/132/22	400	132	22	Mocambique	Motraco	Maputo S/S
1998	100	400	400	-	-	Namibia	Nampower	Kokerboom S/S
1998	100	400	400	-	-	Namibia	Nampower	Kokerboom S/S
1998	100	400	400	-	-	Namibia	Nampower	Kokerboom S/S
1998	40	220/132/33	220	132	33	Namibia	Nampower	Auas S/S
1998	40	220/132/33	220	132	33	Namibia	Nampower	Auas S/S

Namibia



Date	MVA	kV Ratio	HV	LV	TER	Country	Customer	Site
1998	40	220/66/22	220	66	22	Namibia	Nampower	Auas S/S
1998	40	220/66/22	220	66	22	Namibia	Nampower	Auas S/S
1998	100	400	400	-	-	Namibia	Nampower	Auas S/S
1998	100	400	400	-	-	Namibia	Nampower	Auas S/S
1998	315	400/220/22	400	220	22	Namibia	Nampower	Kokerboom S/S
1998	10	30/14.4	30	14.4	-	Senegal	Ind. Chimiques Du Senegal	Mbao
1998	440	132/21	132	21	-	UK	Enfield Energy Centre Ltd	Enfield P/S
1998	330	245/21	245	21	-	USA	American National Power	Midlothian
1998	330	345/21	345	21	-	USA	American National Power	Midlothian
1998	330	345/21	345	21	-	USA	American National Power	Midlothian
1998	330	345/21	345	21	-	USA	American National Power	Midlothian
1998	15	21/4.16	21	4.16	-	USA	American National Power	Midlothian
1998	15	21/4.16	21	4.16	-	USA	American National Power	Midlothian
1998	25	21/5/4.16	21	5/4.16	-	USA	American National Power	Midlothian
1998	25	21/5/4.16	21	5/4.16	-	USA	American National Power	Midlothian
1999	63	220/34.5	220	34.5	-	Congo	Grand Terril Lubumbashi	Slag Treatment Plant
1999	12	34.5/6.6	34.5	6.6	-	Congo	Grand Terril Lubumbashi	Slag Treatment Plant
1999	67	400/15	400	15	-	Namibia	Nampower	Auas S/S SVC
1999	67	400/15	400	15	-	Namibia	Nampower	Auas S/S SVC
1999	7	132	132	-	-	Namibia	Nampower	Windhoek
1999	30	132/33	132	33	-	Nigeria	Nat. Elec. Power Authority	Nigeria
1999	30	132/33	132	33	-	Nigeria	Nat. Elec. Power Authority	Nigeria
1999	30	132/33	132	33	-	Nigeria	Nat. Elec. Power Authority	Nigeria
1999	30	132/33	132	33	-	Nigeria	Nat. Elec. Power Authority	Nigeria
1999	30	132/33	132	33	-	Nigeria	Nat. Elec. Power Authority	Nigeria
1999	30	132/33	132	33	-	Nigeria	Nat. Elec. Power Authority	Nigeria
1999	30	132/33	132	33	-	Nigeria	Nat. Elec. Power Authority	Nigeria
1999	30	132/33	132	33	-	Nigeria	Nat. Elec. Power Authority	Nigeria
1999	30	132/33	132	33	-	Nigeria	Nat. Elec. Power Authority	Nigeria
1999	30	132/33	132	33	-	Nigeria	Nat. Elec. Power Authority	Nigeria
1999	60	132/33	132	33	-	Nigeria	Nat. Elec. Power Authority	Nigeria
1999	60	132/33	132	33	-	Nigeria	Nat. Elec. Power Authority	Nigeria
1999	60	132/33	132	33	-	Nigeria	Nat. Elec. Power Authority	Nigeria
1999	60	132/33	132	33	-	Nigeria	Nat. Elec. Power Authority	Nigeria
1999	60	132/33	132	33	-	Nigeria	Nat. Elec. Power Authority	Nigeria
1999	60	132/33	132	33	-	Nigeria	Nat. Elec. Power Authority	Nigeria
1999	60	132/33	132	33	-	Nigeria	Nat. Elec. Power Authority	Nigeria
1999	60	132/33	132	33	-	Nigeria	Nat. Elec. Power Authority	Nigeria
1999	150	330/132	330	132	-	Nigeria	Nat. Elec. Power Authority	Nigeria
1999	150	330/132	330	132	-	Nigeria	Nat. Elec. Power Authority	Nigeria

Namibia

Date	MVA	kV Ratio	HV	LV	TER	Country	Customer	Site
1999	140	345/15.75	345	15.75	-	Nigeria	Nat. Elec. Power Authority	Sapele P/S
1999	140	345/15.75	345	15.75	-	Nigeria	Nat. Elec. Power Authority	Sapele P/S
1999	168.5	345/10.5	345	10.5	-	Nigeria	Nat. Elec. Power Authority	Sapele P/S
1999	168.5	345/10.5	345	10.5	-	Nigeria	Nat. Elec. Power Authority	Sapele P/S
1999	10	90.54/14.4/4157	90.54	14.4	4157	Senegal	ABB Senegal	ICS
1999	20	132/66/11	132	66	11	Swaziland	Swaziland Electricity Board	Nhlangano S/S
1999	40	132/66/11	132	66	11	Swaziland	Swaziland Electricity Board	Hele-Hele S/S
1999	40	132/66/11	132	66	11	Swaziland	Swaziland Electricity Board	Hele-Hele S/S
1999	40	132/66/11	132	66	11	Swaziland	Swaziland Electricity Board	Hele-Hele S/S
1999	63	132/66/11	132	66	11	Swaziland	Swaziland Electricity Board	Stone Henge S/S
1999	250	400/132/11	400	132	11	Swaziland	Swaziland Electricity Board	Edwaleni S/S
1999	250	400/132/11	400	132	11	Swaziland	Swaziland Electricity Board	Edwaleni S/S
1999	470	134/21	134	21	-	UK	South Coast Power Ltd	Shoreham P/S
1999	15	21/4.26	21	4.26	-	USA	American National Power	Lake Road
1999	25	21/5/4.26	21	5	4.26	USA	American National Power	Lake Road
1999	25	21/5/4.26	21	5	4.26	USA	American National Power	Lake Road
1999	330	354/21	354	21	-	USA	American National Power	Blackstone
1999	330	354/21	354	21	-	USA	American National Power	Blackstone
1999	350	354/21	354	21	-	USA	American National Power	Lake Road
1999	350	354/21	354	21	-	USA	American National Power	Lake Road
1999	350	354/21	354	21	-	USA	American National Power	Lake Road
1999	25	21/5/4.26	21	5	4.26	USA	American National Power	Blackstone
1999	25	21/5/4.26	21	5	4.26	USA	American National Power	Blackstone
1999	350	354/21	354	21	-	USA	American National Power	Hays
1999	350	354/21	354	21	-	USA	American National Power	Hays
1999	350	354/21	354	21	-	USA	American National Power	Hays
1999	350	354/21	354	21	-	USA	American National Power	Hays
1999	25	21/5/4.26	21	5	4.26	USA	American National Power	Hays
1999	25	21/5/4.26	21	5	4.26	USA	American National Power	Hays
1999	15	21/4.26	21	4.26	-	USA	American National Power	Hays
1999	15	21/4.26	21	4.26	-	USA	American National Power	Hays
2000	25	138/20/6.6	138	20	6.6	Madagascar	Jirama	Tana North S/S
2000	25	138/20/6.6	138	20	6.6	Madagascar	Jirama	Tana North S/S
2000	300	410/21	410	21	-	Mexico	Com. Federal de Electricidad	Monterrey
2000	280	230/13.8/13.8	230	13.8/13.8	-	Mexico	Com. Federal de Electricidad	Valle De Mexico
2000	90	330/11	330	11	-	Namibia	Nampower	Ruacana-hydro
2000	100	400	400	-	-	Namibia	Nampower	Kokerboom S/S



Namibia

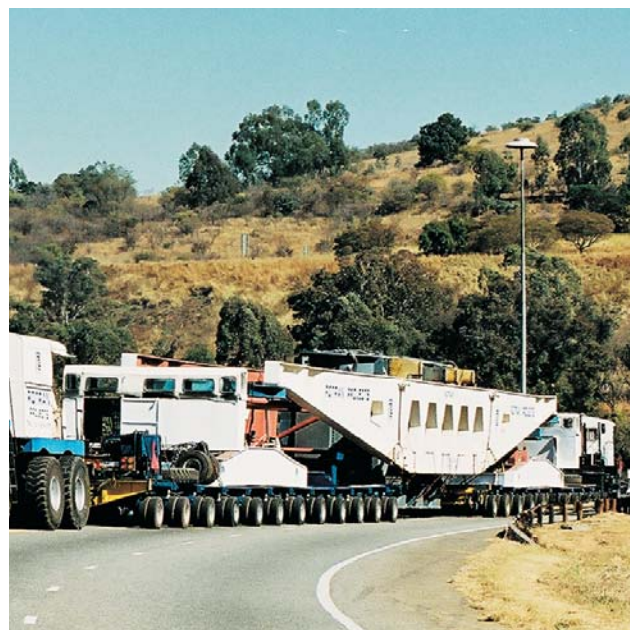
Date	MVA	kV Ratio	HV	LV	TER	Country	Customer	Site
2000	100	400	400	-	-	Namibia	Nampower	Auas S/S
2000	25	21/5/4.26	21	5	4.26	USA	American National Power	Midlothian
2000	25	21/5/4.26	21	5	4.26	USA	American National Power	Midlothian
2000	330	345/21	345	21	-	USA	American National Power	Midlothian II
2000	25	21/5/4.26	21	5	4.26	USA	American National Power	Bellingham
2000	25	21/5/4.26	21	5	4.26	USA	American National Power	Bellingham
2000	330	354/21	354	21	-	USA	American National Power	Bellingham
2000	330	354/21	354	21	-	USA	American National Power	Bellingham
2000	350	236/21	236	21	-	USA	American National Power	La Paloma
2000	350	236/21	236	21	-	USA	American National Power	La Paloma
2000	350	236/21	236	21	-	USA	PG&E National Energy Group	La Paloma
2000	350	236/21	236	21	-	USA	PG&E National Energy Group	La Paloma
2000	15	21/4.26	21	4.26	-	USA	PG&E National Energy Group	La Paloma
2000	15	21/4.26	21	4.26	-	USA	PG&E National Energy Group	La Paloma
2000	30	21/5/4.26	21	5	4.26	USA	PG&E National Energy Group	La Paloma



Date	MVA	kV Ratio	HV	LV	TER	Country	Customer	Site
2000	30	21/5/4.26	21	5	4.26	USA	PG&E National Energy Group	La Paloma
2001	20	66/11	66	11	-	Botswana	Botswana Power Corp	Tati-mine
2001	30	132/66/6.6	132	66	6.6	Botswana	Botswana Power Corp	Francistown
2001	30	132/66/6.6	132	66	6.6	Botswana	Botswana Power Corp	Francistown
2001	10	132/11	132	11	-	Botswana	Botswana Power Corp	Tshabong
2001	10	132/11	132	11	-	Botswana	Botswana Power Corp	Tshabong
2001	12.5	66/11	66	11	-	Botswana	Botswana Power Corp	Selebi Phikwe
2001	20	132/33	132	33	-	Botswana	Botswana Power Corp	Lothlakane S/S
2001	20	132/33	132	33	-	Botswana	Botswana Power Corp	Lothlakane S/S
2001	20	132/11	132	11	-	Botswana	Botswana Power Corp	Kanye S/S
2001	20	132/11	132	11	-	Botswana	Botswana Power Corp	Kanye S/S
2001	20	132/11	132	11	-	Botswana	Botswana Power Corp	Gaborone East
2001	20	132/11	132	11	-	Botswana	Botswana Power Corp	Gaborone East
2001	20	132/11	132	11	-	Botswana	Botswana Power Corp	Woodhall
2001	20	132/11	132	11	-	Botswana	Botswana Power Corp	Woodhall
2001	20	132/11	132	11	-	Botswana	Botswana Power Corp	Woodhall
2001	20	132/11	132	11	-	Botswana	Botswana Power Corp	Maun
2001	20	132/11	132	11	-	Botswana	Botswana Power Corp	Maun
2001	30	110/22/6.6	110	22	6.6	Mocambique	Electricidade De Mocambique	Beira

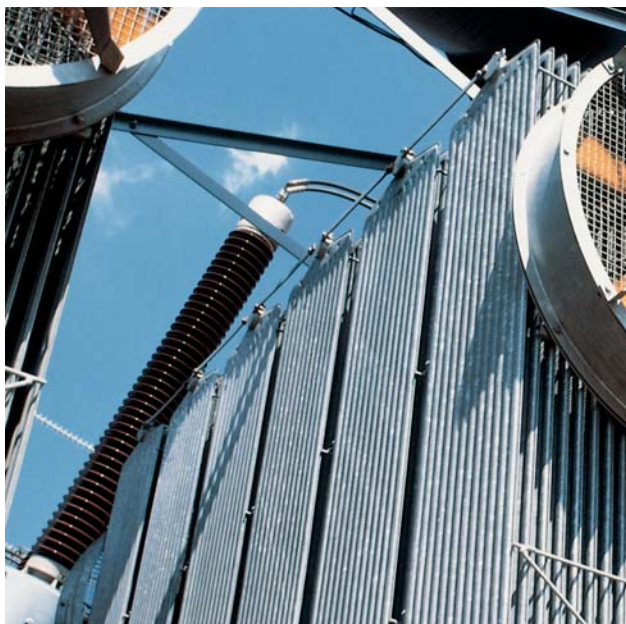
Namibia Nigeria

Date	MVA	kV Ratio	HV	LV	TER	Country	Customer	Site
2001	12.776	66/0.651/0.651	66	0.651	0.651	Namibia	Namzinc/Anglo American	Scorpion Mine
2001	12.776	66/0.651/0.651	66	0.651	0.651	Namibia	Namzinc/Anglo American	Scorpion Mine
2001	12.776	66/0.651/0.651	66	0.651	0.651	Namibia	Namzinc/Anglo American	Scorpion Mine
2001	10	132/33	132	33	-	Namibia	Nampower	Brakwater Stores
2001	10	132/33	132	33	-	Namibia	Nampower	Brakwater Stores
2001	20	66/11	66	11	-	Namibia	Nampower	Brakwater Stores
2001	20	66/11	66	11	-	Namibia	Nampower	Brakwater Stores
2001	20	66/11	66	11	-	Namibia	Nampower	Brakwater Stores
2001	60	132/33	132	33	-	Nigeria	Nat. Elec. Power Authority	Central Area Abuja
2001	60	132/33	132	33	-	Nigeria	Nat. Elec. Power Authority	Central Area Abuja
2001	60	132/33	132	33	-	Nigeria	Nat. Elec. Power Authority	Katampe S/S Abuja
2001	60	132/33	132	33	-	Nigeria	Nat. Elec. Power Authority	Katampe S/S Abuja
2001	150	330/132/33	330	132	33	Nigeria	Nat. Elec. Power Authority	Katampe S/S Abuja
2001	150	330/132/33	330	132	33	Nigeria	Nat. Elec. Power Authority	Katampe S/S Abuja
2001	350	354/21	354	21	-	USA	American National Power	Midlothian
2001	225	500/18	500	18	-	USA	A E S	AES Greystone
2001	450	500/18/18	500	18/18	-	USA	A E S	AES Greystone
2001	25	21/5/4.26	21	5	4.26	USA	American National Power	Midlothian
2001	205	500/22.9	500	22.9	-	USA	Louisiana Generating Llc	Big Cajun P/S
2002	70	225/90/15	225	90	15	Cote D'ivoire	Sopie Via Puroil	Riviera
2002	70	225/90/15	225	90	15	Cote D'ivoire	Sopie Via Puroil	Riviera
2002	500	400/132/22	400	132	22	Mocambique	Electricidade De Mocambique	Maputo S/S
2002	160	220/66/22	220	66	22	Namibia	Nampower	Van Eck P/S
2002	7	132	132	-	-	Namibia	Nampower	Windhoek
2002	7	132	132	-	-	Namibia	Nampower	Windhoek
2002	7	132	132	-	-	Namibia	Nampower	Windhoek
2002	40	220/132/33	220	132	33	Namibia	Nampower	Harib S/S
2002	40	220/132/33	220	132	33	Namibia	Nampower	Harib S/S
2002	40	220/132/33	220	132	33	Namibia	Nampower	Harib S/S
2002	40	220/132/33	220	132	33	Namibia	Nampower	Harib S/S
2002	40	132/66/22	132	66	22	Namibia	Nampower	Ruacana P/S
2002	40	132/33	132	33	-	Nigeria	Nepa Via Jkn Ltd	Calabar & Akure
2002	40	132/33	132	33	-	Nigeria	Nepa Via Jkn Ltd	Calabar & Akure
2003	33	161/34.5	161	34.5	-	Ghana	Volta River Authority	Wassa Ghana
2003	33	161/11.5	161	11.5	-	Ghana	Volta River Authority	Tarkwa
2003	40	132/33	132	33	-	Lesotho	Lesotho Electricity Corp	Mazenod S/S
2003	30	66/33	66	33	-	Mocambique	Electricidade De Mocambique	Machava S/S



Nigeria Philippines Portugal Senegal Swaziland

Date	MVA	kV Ratio	HV	LV	TER	Country	Customer	Site
2003	30	66/33	66	33	-	Mocambique	Electricidade De Mocambique	Machava S/S
2003	30	66/33	66	33	-	Mocambique	Electricidade De Mocambique	Matola S/S
2003	40	132/66	132	66	22	Namibia	Nampower	Ruacana P/S
2003	35	161/10.5/21	161	10.5/21	-	Togo	Comm. Electrique Du Benin	Lome Aflao
2003	35	161/10.5	161	10.5	-	Togo	Comm. Electrique Du Benin	Turbine A Gaz - Lome Port
2003	35	161/21	161	21	-	Togo	Comm. Electrique Du Benin	Poste De Lome B
2004	60	220/66/11	220	66	11	Botswana	Botswana Power Corp	Morupule S/S
2004	30	21/5/4.26	21	5	4.26	Brazil	Alstom Power	Termobahia
2005	24	106/16	106	16	-	Congo	Ruashi Mining - Lubumbashi	Lubumbashi
2005	20	132/33	132	33	-	Lesotho	Lesotho Steel Products	Letsoeneng
2005	20	132/33	132	33	-	Lesotho	Lesotho Steel Products	Letsoeneng
2005	330	345/21	345	21	-	Usa	Alstom Power Inc	Spare Unit
2006	50	220/15	220	15	-	Congo	Ruashi Mining - Lubumbashi	Ruashi Substation
2006	50	220/15	220	15	-	Congo	Ruashi Mining - Lubumbashi	Ruashi Substation
2007	315	400/220/22	400	220	22	Botswana	Botswana Power Corporation	Phokoje
2007	33	161/11	161	11	-	DRC	Conco	Tarkwa
2008	20	66/11	66	11	-	Botswana	ABB Botswana	Mmamashia
2008	120	220/132/33	220	132	33	Namibia	ABB Namibia	Trekkoppies
2008	120	220/132/33	220	132	33	Namibia	ABB Namibia	Trekkoppies
2008	120	220/132/33	220	132	33	Namibia	ABB Namibia	Trekkoppies
2008	120	220/132/33	220	132	33	Namibia	ABB Namibia	Trekkoppies
2008	60	33/11.5	33	11.5	-	Nigeria	Group 5	ABA P/S NIGERIA
2008	60	33/11.5	33	11.5	-	Nigeria	Group 5	ABA P/S NIGERIA
2008	60	33/11.5	33	11.5	-	Nigeria	Group 5	ABA P/S NIGERIA
2009	40	220/66/11	220	66	11	Botswana	ABB Botswana	Disego
2009	20	66/11	66	11	-	Botswana	ABB Botswana	Mmamashia
2009	20	132/11	132	11	-	Botswana	Botswana Power Corp	Gaborone S/S
2009	40	220/132/33	220	132	33	Namibia	ABB Namibia	Brakwater Stores
2009	40	220/132/33	220	132	33	Namibia	ABB Namibia	Brakwater Stores
2009	40	220/132/33	220	132	33	Namibia	ABB Namibia	Brakwater Stores
2009	40	220/66/22	220	66	22	Namibia	ABB Namibia	Brakwater Stores
2009	40	220/66/22	220	66	22	Namibia	ABB Namibia	Brakwater Stores
2009	40	220/132/33	220	132	33	Namibia	ABB Namibia	Brakwater Stores
2009	40	220/132/33	220	132	33	Namibia	ABB Namibia	Brakwater Stores
2009	40	220/11	220	11	-	Namibia	ABB Namibia	Valencia
2009	40	220/11	220	11	-	Namibia	ABB Namibia	Valencia
2009	40	220/11	220	11	-	Namibia	ABB Namibia	Valencia



Swaziland Togo UK USA Zambia Zimbabwe

Date	MVA	kV Ratio	HV	LV	TER	Country	Customer	Site
2009	40	220/11	220	11	-	Namibia	ABB Namibia	Valencia
2009	40	132/33	132	33	-	Namibia	Alstom Power	Wlotkje
2009	10	132/11	132	11	-	Namibia	Alstom Power	Brakwater Stores
2009	10	132/11	132	11	-	Namibia	Alstom Power	Brakwater Stores
2009	10	132/11	132	11	-	Namibia	Alstom Power	Brakwater Stores
2009	40	132/11	132	11	-	Namibia	ABB Namibia	Tsumeb Smelter
2009	40	132/11	132	11	-	Namibia	ABB Namibia	Tsumeb Smelter
2010	105	330/11	330	11	-	Namibia	ABB Namibia	Ruacana
2010	315	400/220/22	400	220	22	Botswana	Botswana Power Corp	Morupule
2010	315	400/220/22	400	220	22	Botswana	Botswana Power Corp	Isang
2010	315	400/220/22	400	220	22	Botswana	Botswana Power Corp	Isang
2010	105	330/11	330	11	-	Namibia	ABB Namibia	Ruacana
2011	315	400/220/22	400	220	22	Botswana	Botswana Power Corp	Morupule
2011	315	400/220/22	400	220	22	Botswana	Botswana Power Corp	Isang
2011	315	400/220/22	400	220	22	Botswana	Botswana Power Corp	Isang
2011	40	120/11	120	11	-	DRC	Boss Mining	Kakana
2011	40	120/11	120	11	-	DRC	Boss Mining	Kakana
2011	40	132/11	132	11	-	Namibia	ABB Namibia	Brakwater Stores
2012	40	132/11	132	11	-	Namibia	ABB Namibia	Brakwater Stores
2012	40	132/11	132	11	-	Namibia	ABB Namibia	Brakwater Stores
2014	25	132/33	132	33	-	Botswana	Powertech IST	Jwaneng
2014	25	132/33	132	33	-	Botswana	Powertech IST	Jwaneng
2014	40	220/33	220	33	-	Namibia	ABB Namibia	Brackwater Stores
2014	5	66/22	66	22	-	Namibia	ABB Namibia	Brakwater Stores
2014	10	66/33	66	33	-	Namibia	ABB Namibia	Brakwater Stores
2014	10	132/11	132	11	-	Namibia	ABB Namibia	Brakwater Stores

Legend

A - Auto

DW - Double Wound

DR - Dual Ratio

SHRX - Shunt Reactor

GEN - Generator Transformer